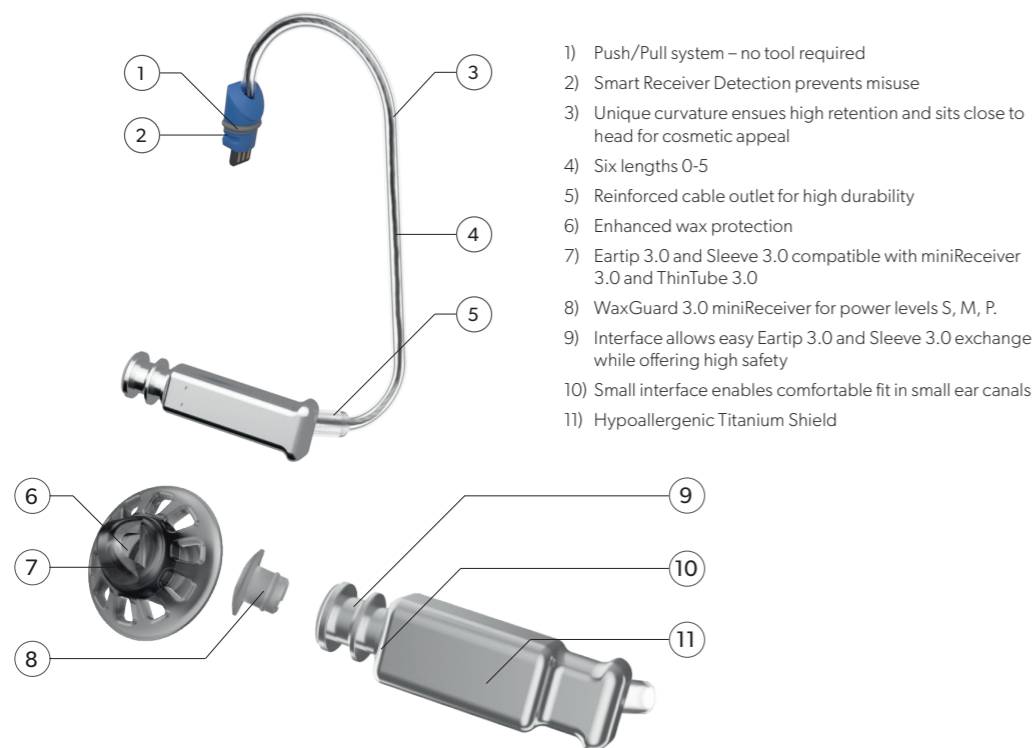




EarWear 3.0 – Discreet. Secure. Comfortable.

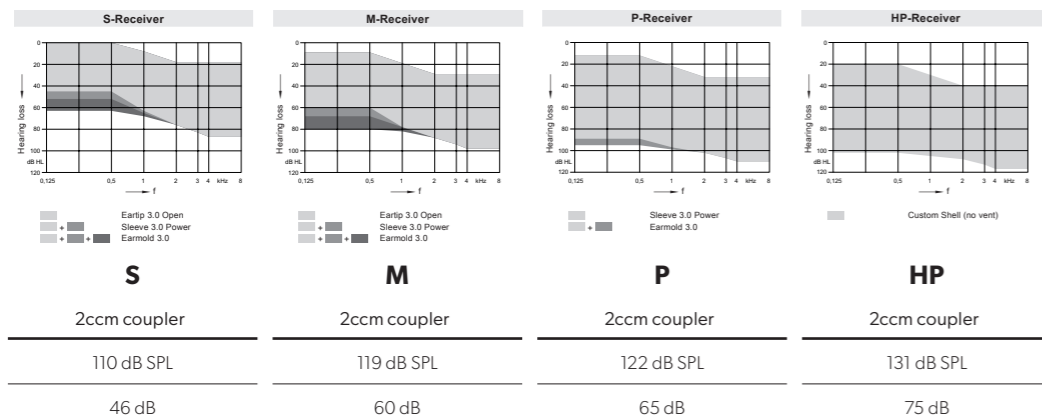
EarWear 3.0 delivers superior comfort and fit. Its small, subtle design ensures a secure and barely noticeable presence. With easy-to-exchange Eartips and Sleeves 3.0, and compatibility with custom earmolds, it provides an optimal hearing experience for your patients.

miniReceiver 3.0

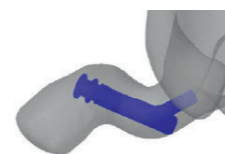


- 1) Push/Pull system – no tool required
- 2) Smart Receiver Detection prevents misuse
- 3) Unique curvature ensures high retention and sits close to head for cosmetic appeal
- 4) Six lengths 0-5
- 5) Reinforced cable outlet for high durability
- 6) Enhanced wax protection
- 7) Eartip 3.0 and Sleeve 3.0 compatible with miniReceiver 3.0 and ThinTube 3.0
- 8) WaxGuard 3.0 miniReceiver for power levels S, M, P.
- 9) Interface allows easy Eartip 3.0 and Sleeve 3.0 exchange while offering high safety
- 10) Small interface enables comfortable fit in small ear canals
- 11) Hypoallergenic Titanium Shield

Available in four power levels: S, M, P, and HP



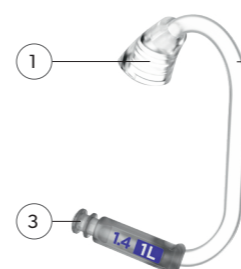
ThinTube 3.0



The improved bending of the tubing and outlet preserves the acoustic coupling in the ear canal, prevents lateral migration, and reduces the need for a concha lock.



ThinTube 3.0 | 0.9 mm
Mild to moderate hearing loss



ThinTube 3.0 P | 1.4 mm
Severe hearing loss

- 1) One-piece ThinTube 3.0 sits close to the head for cosmetic appeal
- 2) Five lengths 0-4
- 3) Easy exchange of Eartip 3.0 and Sleeve 3.0 while offering high safety

Eartips 3.0 and Sleeves 3.0

Comfortable fit, even in small ear canals

Secure and proven design is easy for wearers to exchange

Compatible with miniReceiver 3.0, ThinTube 3.0, and IX instant-fit hearing aids

Open eartips
5mm, 7mm, 10 mm



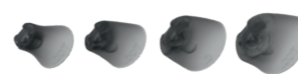
Tulip eartips
8mm, 12mm



Round 1 eartips
S, M, L



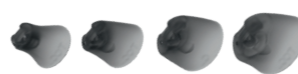
Vented Sleeves
XS, S, M, L



Closed Sleeves
XS, S, M, L



Power
XS, S, M, L



Earmolds 3.0

Compatible with miniReceiver 3.0, ThinTube 3.0, and Silk Charge&Go IX hearing aids



Earmold 3.0 is available in a short and a long version



The long Earmold 3.0 comes with either WaxGuard 3.0 miniReceiver or Wax Guard Custom Molds

Concha Lock Sleeve 3.0

Optional Concha Lock Sleeve 3.0 is available in three sizes



Size	Compatibility
Concha Lock Sleeve 3.0 S	miniReceiver 3.0 S ThinTube 3.0 ThinTube 3.0 P
Concha Lock Sleeve 3.0 M	miniReceiver 3.0 M
Concha Lock Sleeve 3.0 P	miniReceiver 3.0 P

Be
Brilliant™

EarWear compatibility table

	Product family	Form Factor & Battery Type	Eartips 3.0 & Sleeves 3.0	Earmold 3.0 RIC	Earmold 3.0 Standard	ThinTube 3.0	miniReceiver 3.0	WaxGuard 3.0 miniReceiver	WaxGuard 3.0 HP Receiver CXX	WaxGuard Custom aid
IX	Pure Charge&Go IX	RIC Li-ion	●	●	–	–	●	●	●	–
	Styletto IX	Slim RIC Li-ion	●	●	–	–	●	●	–	–
	Motion Charge&Go M IX	BTE Li-ion	●	–	●	●	–	●	–	–
	Motion Charge&Go P IX	BTE Li-ion	●	–	●	●	–	●	–	–
	Motion Charge&Go SP IX	BTE Li-ion	–	–	●	–	–	●	–	–
	Insio IX IIC/CIC/ITC/HS/ITE	Custom Zinc-air	–	–	–	–	–	–	–	●
	Active Pro IX	Instant Fit Li-ion	●	–	–	–	–	●	–	–
	Silk Charge&Go IX	Instant Fit Li-ion	●	●*	–	–	–	●	–	–
AX	Pure Charge&Go AX	RIC Li-ion	●	●	–	–	●	●	●	–
	Pure 312 AX	RIC Zinc-air	●	●	–	–	●	●	●	–
	Styletto AX	Slim RIC Li-ion	●	●	–	–	●	●	–	–
	Intuis M 4	BTE Li-ion	●	–	●	●	–	–	–	–
	Intuis P 4	BTE Li-ion	●	–	●	●	–	–	–	–
	Intuis SP 4	BTE Li-ion	–	–	●	–	–	–	–	–
	Insio Charge&Go AX ITC/HS/ITE	Custom Li-ion	–	–	–	–	–	–	–	●
	Motion Charge&Go X	BTE Li-ion	●	–	●	●	–	●	–	–
X	Motion Charge&Go P X	BTE Li-ion	●	–	●	●	–	●	–	–
	Motion Charge&Go SP X	BTE Li-ion	–	–	●	–	–	●	–	–
Nx	Insio Nx IIC/CIC/ITC/HS/ITE	Custom Zinc-air	–	–	–	–	–	–	–	●

* Silk IX compatible with the instant-fit earmold.

How to use the EarWear 3.0 measuring tool



Proper Use of Measuring Tool

1. Use the Measuring Gauge for EarWear 3.0 (white tool)
2. Place the measuring gauge on the ear of the wearer
3. Read the number that comes closest to the upper portion of the ear canal opening. This number corresponds with the length of the 3.0 receiver to use.
4. Repeat on opposite side



Examples of a proper fit (left) vs the receiver is too long (right)

✓ Proper fit Wire enters at top of canal



✗ Incorrect fit Wire enters mid-canal



WaxGuard



Item Number	10993607	10999334	10966257	10962504
Product Name on mySignia	WAXGUARD 3.0 MINIRECEIVER SIGNIA	WAXGUARD 3.0 HP RECEIVER CXX	WAXGUARD 2.0 MINIRECEIVER SIGNIA	WAXGUARD CUSTOM MOLDS
Product description on mySignia	Compatible with miniReceiver 3.0, ThinTube 3.0, ThinTube 3.0 P for IX/AX RICs, IX Instant-fit, IX/AX/X BTEs.	Compatible with HP 3.0 receivers for IX/AX RICs	Compatible with miniReceiver 2.0 for Xperience and older platforms.	Compatible with custom hearing aids (all platforms) and some earmolds.