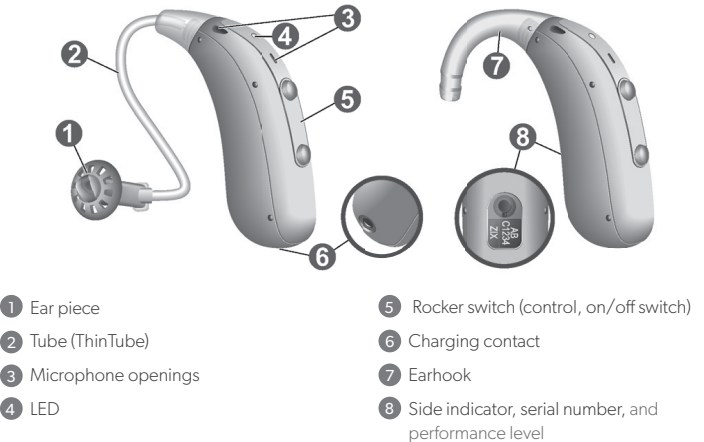


1. Hearing aid components



2. Turning your hearing aids on or off

**Via the charger:**  
The charger must be connected to the power supply. Refer to the charger’s user guide for details.

- **Turning on:** Take the hearing aids out of the charger. The startup melody is played in your hearing aids, and the built-in LEDs light up for 6 seconds. The default volume and hearing program are set.
- **Turning off:** Place the hearing aids in the charger. Note that the charger must be connected to the power supply.

- Via the rocker switch:**
- **Turning on:** Press and hold the lower part of the rocker switch until the startup melody starts to play and the LEDs light up. Release the rocker switch while the melody is playing and the LEDs are lit. The default volume and hearing program are set.
  - **Turning off:** Press and hold the lower part of the rocker switch for several seconds, until the power-off melody starts to play, and the LEDs start blinking. When the LEDs stop blinking, the hearing aids will be off. A power down melody is played.



**LED status:**  
The LED on your hearing aid gives you information about the status of turning it on/off. See the following table:

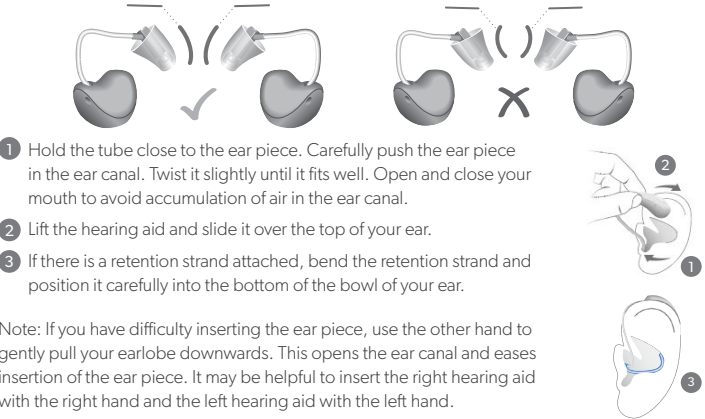
| LED | Status description  |
|-----|---|
|     | LED glows for 6 seconds:<br>The hearing aid is switching on. This pattern is shown when you remove the hearing aid from the charger, and when you switch the hearing aid on with the rocker switch. |
|     | LED blinks for 3 seconds:<br>The hearing aid is switching off. This pattern is only shown when you switch the hearing aid off with the rocker switch.   |

3. Inserting your hearing aids

Your hearing aids have been fine-tuned for your right and left ear.

Colored markers indicate the side: Red marker = right ear  
Blue marker = left ear

Your hearing aids have either an eartip, sleeve, or earmold on the end of the tubing. If your hearing aids have sleeves, ensure the bend of the sleeve is in line with the bend of the tubing for optimal fit and comfort.



Note: If you have difficulty inserting the ear piece, use the other hand to gently pull your earlobe downwards. This opens the ear canal and eases insertion of the ear piece. It may be helpful to insert the right hearing aid with the right hand and the left hearing aid with the left hand.

Continued Inside

About Signia

Only Signia combines industry-leading audiology and technology to deliver iconic innovations in hearing to enhance human performance. We put hearing aid wearers first, with products that fit their wants, needs and style. The wearer is at the center of our universe and their needs are woven into our DNA.

For us, this is not about correcting a loss, it’s about gaining an edge. Not just performing, but performing at their best.

The information in this document contains general descriptions of the technical options available, which do not always have to be present in individual cases and are subject to change without prior notice.

The Bluetooth® word mark and logos are owned by the Bluetooth SIG, Inc. and any use of such marks by WSAUD A/S is under license. Other trademarks and trade names are those of their respective owners.

Apple, the Apple logo and iPhone are trademarks of Apple Inc., registered in the U.S. and other countries. App Store is a service mark of Apple Inc.

Android, Google Play and the Google Play logo are trademarks of Google Inc.

**Distributor**  
WS Audiology USA, Inc.  
101 Wood Avenue South, 7th floor  
Iselin, NJ 08830  
Phone: (800) 766-4500  
Fax: (732) 562-6696

Copyright © 2025  
Signia is a registered trademark of WSAUD A/S.  
21051525/ D21051525 REV 1.0 07/25  
08/25 SI-22801

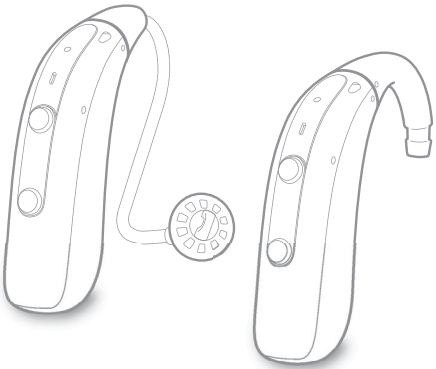
- Find us on:**
- [signia.net/en-us](http://signia.net/en-us)
  - [facebook.com/signiahearingUS](https://facebook.com/signiahearingUS)
  - [youtube.com/signiahearing](https://youtube.com/signiahearing)
  - [instagram.com/signiahearingus](https://instagram.com/signiahearingus)

**signia.net**



Motion C&G P IX

Quick Start Guide



Desktop  
Charger  
User Manual



Dry&Clean  
Charger  
User Manual



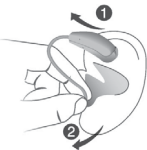
Motion  
Charge&Go P IX  
User Manual



Safety manual  
for hearing  
instruments

## 4. Removing your hearing aid

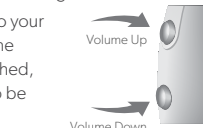
- 1 Lift the hearing aid and slide it over the top of your ear.
- 2 Hold the tubing close to the ear piece and pull the ear piece out carefully.



## 5. User controls and hearing aid adjustments

Your Hearing Care Professional can provide you with details on your hearing aid controls and adjustments available to you. Your Hearing Care Professional can enable the rocker switch to control volume, hearing programs, and make other adjustments to your hearing aids.

- Your hearing aids automatically adjust their volume and sound to your specific listening situation. An optional signal can indicate volume change. Once the maximum or minimum volume has been reached, you may hear an optional signal tone. The rocker switch can also be used to change hearing programs.
- The miniPocket remote control can adjust volume and programs of your hearing aids.
- The Signia app can change volume, hearing programs, and make other adjustments to your hearing aids. Download the Signia app from the App Store or Google Play store.



## 6. Charging your hearing aids

Refer to your charger user guide for instructions and useful tips for charging.

- Before placing your hearing aids in the charger, clean the hearing aid charging contacts. See section 8 for details.
- Place your hearing aids in charger.
- A full charging cycle takes about 4 hours. After 30 minutes, it is possible to use your hearing aids for up to 6 hours. Charging times may vary due to the use of the hearing aids and the age of the power cell.
- We recommend charging your hearing aids overnight so you can be sure to start your day with fully-charged hearing aids.

## 7. Low power indication

- You will hear an alert signal to indicate the battery is running low.
- The signal will be repeated every 15-30 minutes until the hearing aid stops working and needs to be recharged.
- Once you hear the low battery indicator, you have about 1.5 hours of charge left in your hearing aids depending on your usage.

## 8. Hearing aid maintenance and care

Ask your Hearing Care Professional for assistance with care and maintenance of the hearing aids, eartips and charger as needed. Your Hearing Care Professional can also provide recommendations for cleaning care products, hearing aid drying products, special care sets, or more information on how to keep your hearing aids and charger in good condition.

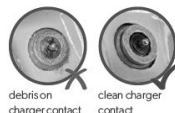
### Cleaning hearing aids

- Your hearing aids have a protective coating. However, if not cleaned regularly, you may damage the hearing aids or cause personal injury.
- Use a soft, dry tissue or other cleaning tools/solutions recommended by your hearing care provider.
- Clean your hearing aid(s), the charging contacts, and eartips/sleeves/earmolds DAILY right after removing them from your ears to prevent earwax from drying and hardening.
- Earwax accumulation on the charging contacts will affect the ability to charge the hearing aid.
- Earwax wax accumulation on the eartips/sleeves may affect sound quality.
- Be careful to not damage the wax protection while cleaning your hearing aids.
- Never apply pressure while cleaning.
- Never use running water or immerse the hearing aids in water.
- Do not use alcoholic solvent on the charging contacts
- For hearing aids with an earhook: Clean the earpieces daily and ask your Hearing Care Professional to clean the tubes or to exchange the ear pieces and tubes as needed.



### Cleaning charger

- Disconnect the charger from the power supply.
- Clean the charger with a soft, dry tissue.
- Remove debris from the charging contacts. If debris accumulates on the charging contacts, it will prevent the hearing aid(s) ability to charge.
- Never use running water or immerse the charger in water.



- If the charger is not connected to the power supply when you place your hearing aids in the charger, the hearing instruments are not turned off.
- If the hearing aids are turned off via a remote control or smartphone app, the hearing aids are not completely turned off. They are in standby-mode and still draw some power.

Long-term storage (weeks, months, longer):

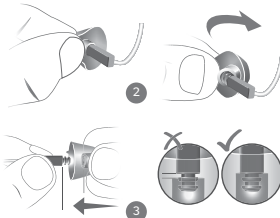
- Fully charge your hearing aids and then turn them off via the lower part of the rocker switch before storing them. We recommend storing the hearing aids with drying products recommended by your Hearing Care Professional.
- We recommend recharging your hearing aids every 3 months to avoid damage to the power cell.
- At 6-month intervals you will have to ensure you charge the hearing aids to avoid an unrecoverable deep discharge of the power cell. Deep-discharged power cells cannot be charged anymore and they have to be replaced.

## 9. Replacing eartip and sleeves

If your hearing aid uses a ThinTube with eartip/sleeve, replace eartip and/or sleeves approximately every 3 months or sooner if you notice cracks or other changes. Remember to clean the ear pieces daily and tubes as required with a soft dry cloth. Never use running water or immerse the eartips/sleeves/tubing in water.

Follow the illustration to the right for how to remove the old eartip or sleeve.

- Ensure that the new eartip or sleeve covers the retention rings of the tubing fully.
- Check for a firm fit of the new eartip or sleeve.



## 10. Exchanging ThinTubes (if applicable for your hearing aids)

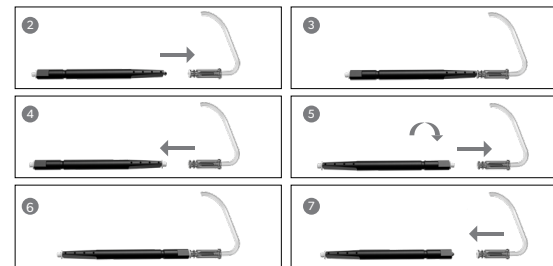
Unscrew the used tube from the hearing aid. Screw on the new tube.



## 11. Replacing your wax protection (if applicable for your hearing aids)

The wax protection will need to be changed on a regular basis. Please follow these steps:

- 1 If applicable, remove eartip or sleeve.
- 2 Pull Application Stick out of package.
- 3 Insert the black side of the application stick into the white end of the tubing.
- 4 Pull the application stick straight out of the tubing (white tip should be on the stick).
- 5 Flip the stick around.
- 6 Insert the application stick into the end of the tubing again.
- 7 Pull the application stick out of the tubing (white tip should remain in the receiver).
- 8 If applicable, place eartip or sleeve back onto the tubing.



## 12. Signia Support Website

Visit the Signia Support page for assistance with your hearing aids, Signia app, Bluetooth connectivity, Bluetooth streaming, accessories and FAQs for first-time hearing aid wearers. <https://www.signia.net/en-us/support/>

## 13. Signia Consumer Bluetooth Hotline

If you are needing additional assistance with connectivity, you can call the Consumer Bluetooth® Support hotline at (800) 350-6093, open Monday - Friday, 8 a.m. to 8 p.m. Eastern Time Zone.

When calling for troubleshooting, it's helpful to have the hearing aid and smartphone models readily available. Hearing aid model information can be found on in the user manual, paperwork from your Hearing Care Provider, or on the hearing aids themselves. If the information is not easily accessible, don't worry, we will still be able to help!

You can also reach the Consumer Bluetooth Hotline by email: [apps.usa@wsa.com](mailto:apps.usa@wsa.com). Please include the information mentioned above in your inquiry and we'll be happy to assist.