

### About Signia

Signia is one of the leading hearing aid brands in the world. Our goal is to enhance human performance through iconic innovations that shape prescription audio solutions. We refuse to accept hearing loss as a limitation. It's not about correcting a loss, it's about gaining an edge. Not just performing, performing brilliantly. Not just hearing again, but hearing better than ever. Hearing every word, beat, and breath. With Signia, you can Be Brilliant.

<sup>1</sup>Jensen et al. (2023). Power the conversation with Signia Integrated Xperience and RealTime Conversation Enhancement. Signia White Paper.

<sup>2</sup>Jensen et al. (2021). Augmenting speech recognition with a new split-processing paradigm. Hearing Review, 28(6), 24-27.

<sup>3</sup>Høydal EH. A new own voice processing system for optimizing communication. Hearing Review. 2017;24(11):20-22.

Find out more on [signia-pro.com](https://signia-pro.com)

Or ask your hearing care professional for more information on Signia hearing aids, useful accessories and the Signia app.



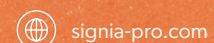
Compatible with Android and iOS. The app is free of charge.

The information in this document contains general descriptions of the technical options available, which do not always have to be present in individual cases and are subject to change without prior notice.

The Bluetooth® word mark and logos are owned by the Bluetooth SIG, Inc. and any use of such marks by WSAUD A/S is under license. Other trademarks and trade names are those of their respective owners.

Order No. 05503-99C1-7600  
© 10.2023 WSAUD A/S SIV-17657

Find us on:



# Unleash the power of conversation

Signia Integrated Xperience with  
RealTime Conversation Enhancement

Be  
Brilliant™



signia





## Signia Integrated Xperience

# Finally, a hearing aid designed for real conversations

Pure Charge&Go T IX

Pure Portable Charger

**Meet the world's first hearing aid with a multi-stream architecture capable of accurately pinpointing multiple moving speakers in real-time conversation.**

Improved hearing is about more than just sound amplification. It is about empowering individuals to immerse themselves in their surroundings, create meaningful connections, and cherish every moment of life's experiences.

Leveraging our profound understanding of dynamic conversations, including the head movements of the wearer and changing positions of speakers, we crafted Signia Integrated Xperience. This groundbreaking technology ensures uninterrupted conversation engagement in noise, addressing a critical challenge many hearing aid wearers face.

Our commitment is to support wearers in leading active lives, unshackled from the limitations of traditional hearing aids and free to contribute and foster deeper connections.

**Experience the transformative power of real-time, dynamic conversation enhancement with Signia Integrated Xperience.**



## Benefits

# Empowering dynamic conversation flow

Group conversations in noise are the biggest unmet need for people with hearing loss. A missed word can lead to a missed opportunity to contribute, which can lead to frustration, isolation, and ultimately withdrawal.

Conversations bring people together. They're dynamic, alive, and unpredictable. That's why a hearing aid made for real conversations should be designed to follow them. Introducing Signia Integrated Xperience with RealTime Conversation Enhancement.\* The world's first hearing aid that can identify, enhance, and track the location of multiple conversation partners in real-time, even as they move.

\* RealTime Conversation Enhancement is not available in all styles. <sup>1</sup> Visit [signia-pro.com/en-us/claims-data](https://signia-pro.com/en-us/claims-data) for more details



**95%**  
of wearers have  
better speech  
reception  
with RealTime  
Conversation  
Enhancement  
than without.<sup>1</sup>





## RealTime Conversation Enhancement

# The science of keeping up with conversations

Signia Integrated Xperience's revolutionary RealTime Conversation Enhancement\* analyzes, augments, and adapts to the dynamic flow of conversations. This lets wearers enjoy a seamless and enriched hearing experience.



### Analyze

Processes 192,000 data points every second to identify speakers and analyze conversation dynamics, authentically reflecting real-life conversations.



### Augment

Uses data gathered to control multiple focus streams that lock on to and dynamically highlight each speaker's voice amidst the noise. Meanwhile, Augmented Focus technology<sup>[2]</sup> processes background sound to ensure a comfortable, immersive conversational experience without distractions.



### Adapt

Our patented multi-stream architecture updates 1000 times per second, and the focus streams merge into a dynamic auditory space that adapts to evolving conversations. This allows for real-time tracking and enhancement of multiple moving speakers, ensuring wearers can fully engage in group discussions.







## Signia Assistant and OVP 2.0

# The 24/7 hearing companion



Signia Assistant is the hearing aid wearer's AI-powered companion. Bolstered by a cloud-based live Deep Neural Network (DNN) trained and updated with real-world data, Signia Assistant understands the wearer's environment and adapts the hearing aids to provide personalized support. As a hearing care professional, you can review and validate these adjustments, ensuring optimal benefits for each wearer and streamlined appointments to focus on their needs.

## Connectivity

# Future-proof connectivity

Get future-proofed connectivity with Signia Integrated Xperience. Our devices are ready for the future Bluetooth LE Audio standard.

Give wearers the chance to stay connected with the future of hearing care.

- **ASHA (Audio Streaming for Hearing Aids)**
- **Made for iPhone®**
- **LE Audio ready\*** via future firmware update
- **Bluetooth connectivity via StreamLine™ Mic**

# Own Voice Processing 2.0

## Contribute comfortably and confidently

Own Voice Processing 2.0 ensures own voice comfort, activating whenever the user speaks to keep their own voice sounding natural and clear.

## Track Progress

OVP. 2.0 technology allows wearers to monitor how often they interact socially through the "My WellBeing" feature in our Signia app.

## Boost Communication

In one study<sup>[3]</sup> 78% of participants reported increased communication when using hearing aids with OVP activated.

## Get the Signia advantage

OVP 2.0 contributes to a holistic approach to hearing wellness and is only available with Signia hearing aids.



Pure Charge&Go T IX

# Deliver discreet, advanced solutions

Pure Charge&Go T IX offer advanced hearing technology in an attractive and comfortable receiver-in-canal (RIC) design.

**Power through the day**

A rechargeable battery ensures your patients enjoy all-day hearing support.

- Pure Charge&Go T IX — Up to 39 hours
- Plus 30 minute quick charge option

**Control at their fingertips**

The easy-to-use Signia app lets wearers fine-tune their hearing aids whenever and wherever needed.

**Proven reliability ensuring best performance**

Patented anti-capillary design with hydrophobic and oleophobic protection

**T-Coil**

The Pure Charge&Go T IX comes with a T-coil to enhance connectivity.

CROS Pure Charge&Go T IX available

Pure Portable Charger



**IP 68 rating**

Ensures the hearing aids will still function after being immersed under 1 m of water for 1h\*

\* excluding receiver

Offer wearers stylish, comfortable, innovative hearing solutions with Pure Charge&Go T IX.



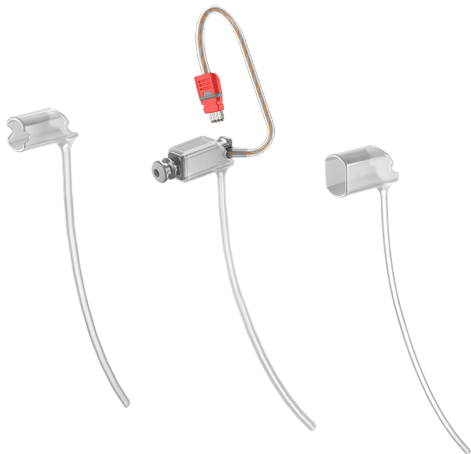
EarWear 3.0

# EarWear: Discreet. Secure. Comfortable.

EarWear 3.0 delivers superior comfort and fit. Its small, subtle design ensures a secure and barely noticeable presence. With easy-to-exchange Eartips and Sleeves 3.0, and compatibility with custom earmolds, it provides an optimal hearing experience for wearers.



MiniReceiver 3.0



Concha Lock Sleeve 3.0



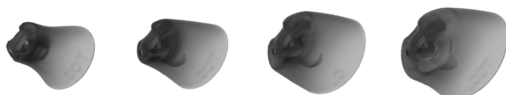
Open EarTips 3.0



Tulip EarTips 3.0



Round One EarTips 3.0



Sleeves 3.0

Accessories

# Stay connected and in control

From changing settings remotely, streaming audio directly, or taking advantage of rechargeability, our broad range of stylish, practical, and easy-to-use accessories makes everyday life easier.



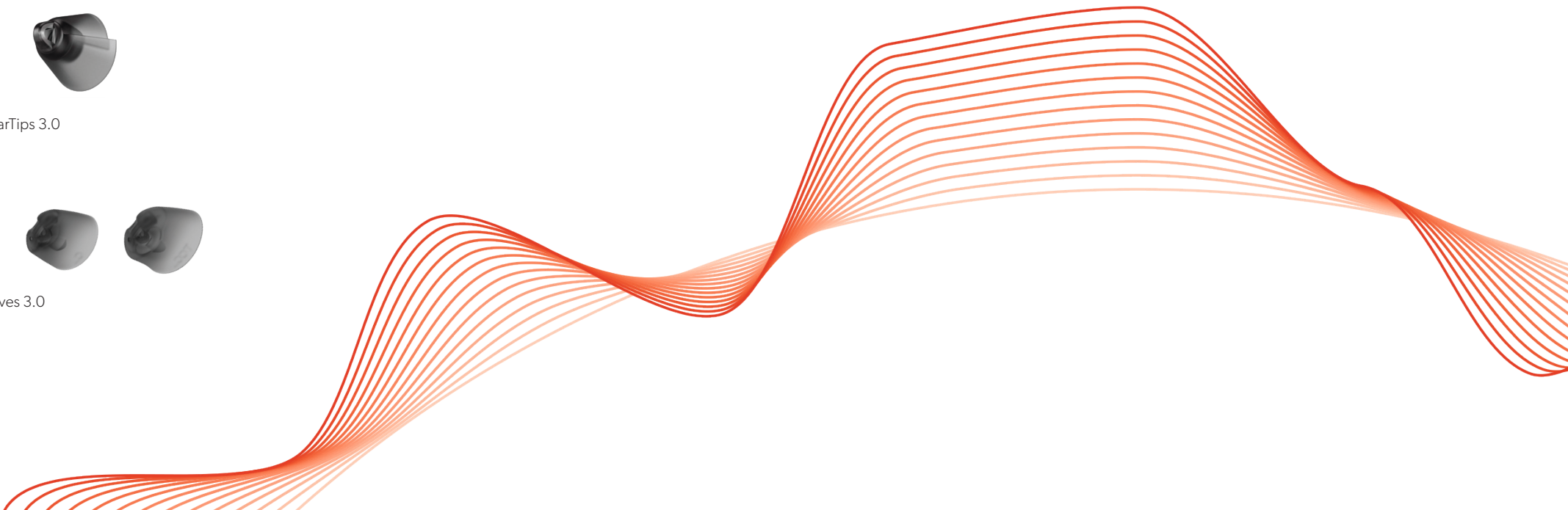
StreamLine™ TV



StreamLine™ Mic



miniPocket™

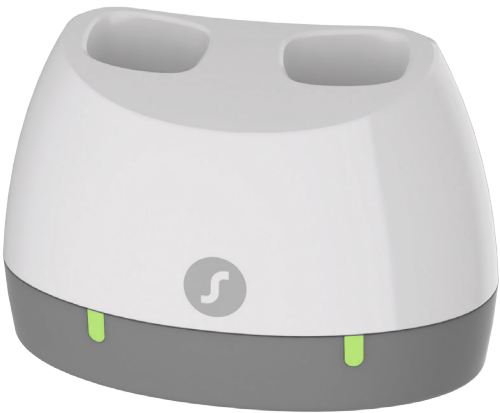




Chargers

# A world of charging possibilities

You can offer Signia Integrated Xperience hearing aid wearers a choice of different chargers to power their hearing aids, depending on their preferred hearing aid and lifestyle.



Pure Charger

This small, reliable desktop charger conveniently indicates charging status with LEDs for each hearing aid.



Pure Dry&Clean Charger

The Pure Dry&Clean Charger not only charges the hearing aids but also offers drying and UVC sanitizing technology to keep the hearing aids in peak condition. LEDs provide easy indication of charging and cleaning status.



Pure Portable Charger  
(Default)

This sophisticated charger offers comfort and charging on the go. Its power bank allows for three full charges of a pair of hearing aids. A lid protects the hearing aids and prevents dust accumulating in the charger. Two LEDs indicate the charging status (one per hearing aid) and one for the integrated power bank.



Multi-Charger  
(Clinic use only)

Your ultimate one-stop charging solution. One charger compatible with all hearing aids that use galvanic charging including Pure Charge&Go T IX.



Pure Charge&Go T IX uses galvanic charging technology



# Signia Integrated Xperience feature overview

Signia Integrated Xperience, featuring RealTime Conversation Enhancement, is the heart of our innovative hearing aids. This technology empowers wearers to engage dynamically in conversations, ensuring every word is understood, every laugh appreciated, and every story fully experienced.

| Features                            | Description  | Performance level |
|-------------------------------------|--|-------------------|
| 7 IX                                |  |                   |
| Conversation management             |  |                   |
| RealTime Conversation Enhancement   | Provides uninterrupted engagement in noisy group conversations by seamlessly tracking the locations of all conversation partners and enhancing their speech.*  | ●●●●●             |
| Conversation Source Analyzer        | Constantly scouts the acoustic environment to identify number of talkers and their location, precisely analyzing 1,000 times per second.   | ●●●●●             |
| Conversation Dynamics Analyzer      | Precisely analyzing conversation dynamics 1,000 times per second including turn-taking and timing, locations of pure noise without speech, and levels of background noise.                           | ✓                 |
| Advanced Focus Streams              | Adds up to 3 additional focus streams providing the correct amount of boost for each conversation partner's speech while allowing the wearer to stay connected to their environment.                 | 3                 |
| Conversation Booster                | Determines the optimal balance of speech enhancement & noise reduction to augment speech while preserving the acoustic environment.  | ●●●●●             |
| Augmented Focus                     | Separates the focus sound (speech) from surrounding sounds, creating a strong contrast.*   | ✓                 |
| Focus Stream                        | Enhances speech signals from the front hemisphere.   | 1                 |
| Surrounding Stream                  | Processes environmental sounds to preserve environmental awareness without masking speech.   | 1                 |
| Own Voice Processing 2.0 (OVP™ 2.0) | Uses real-time recognition of the wearer's voice to preserve the comfortable, familiar sound of the wearer's own voice.*   | ✓                 |
| Dynamic Soundscape Processing 3.0   | Integrates inputs for precise hearing aid optimization, including (when available): acoustic sensors, motion sensors, OVP 2.0, noise detection, SNR analysis, and RealTime Conversation Enhancement. | ●●●●●             |
| SpeechStabilizer                    | Preserves the natural envelope of speech in any situation, including very noisy situations, which preserves acoustic cues that are important for speech understanding.                               | ✓                 |
| Motion Sensor                       | Detects whether the wearer is walking, running, or sitting still to guide how sound is optimized.  | ✓                 |
| e2e wireless 4.0                    | Controls coupling, synchronization, CROS/BiCROS, and a range of sound features.* The lowest system latency in the industry. Provides a smoother sound experience and improves localization.          | ✓                 |
| Speech and Noise Management         | Reduces listening effort using sophisticated sound processing.   | ●●●●●             |
| TruEar 360                          | Reproduces benefits of the natural pinna effect by highlighting the difference between front and back sources of sound.  | ✓                 |
| Binaural Directionality             | Provides scientifically proven enhanced speech understanding in noise.*  | ✓                 |
| Spatial SpeechFocus                 | Steers directional microphone beam to the dominant speech source (front, left, right, or behind the wearer automatically in a car situation or in a dedicated "Strolling" program).*                 | ●●●●●             |
| Speech Focus                        | In the Universal Program, SpeechFocus steers the directional beam either to surround mode for side speech or to the rear. In manual programs, microphone beam to the right/left/rear directions.     | ●●●●●             |

\* Available for bilateral fittings with e2e wireless link  
\*\* Requires Bluetooth connection

| Features                     | Description  | Performance level |
|------------------------------|--|-------------------|
| 7 IX                         |  |                   |
| Listening Comfort            |  |                   |
| Feedback Cancellation        | High speed monitoring and control of feedback in individual processing channels.   | ✓                 |
| eWindScreen™                 | Reduces the interference of wind noise when outdoors.  | ●●●●●             |
| SoundSmoothing™              | Reduces the annoyance of sudden loud impact sound such as when handling glassware.   | ✓                 |
| Auto EchoShield              | Automatically reduces the effect of reverberations and sudden loud noises in reverberant environments.   | ✓                 |
| Reverberant Room Program     | Dedicated program for reverberant environments.  | ✓                 |
| Extended dynamic range       | 117 dB 24 bit processing for enhanced digital encoding of soft and loud sounds.  | ✓                 |
| Extended bandwidth           | 12 kHz available bandwidth for enhanced processing of high-frequency speech and environmental sounds.  | ✓                 |
| Wearer Empowerment           |  |                   |
| Signia Assistant             | Offers wearers instant 24/7 troubleshooting and customized sound adjustments via an intuitive AI-enabled chat. Provides detailed information in Connexx to address each client's fine-tuning needs more precisely. | ✓                 |
| Signia App (iOS and Android) | Easy-to-use smartphone app enables remote control adjustments, audio streaming,** access to My WellBeing,** and support via Signia Assistant** and TeleCare.   | ✓                 |
| Adaptive Streaming Volume    | Speech intelligibility weighted adaptation of the streaming volume depending on the level of ambient noise.  | ✓                 |
| My WellBeing                 | Accessed via the Signia App, wearers can get insights about how much they are using their hearing aids, their level of social interaction, their daily step count, and their overall activity level.               | ✓                 |
| Directional Hearing          | Allows the wearer to adjust the direction of the microphone beam via the Signia App.   | ✓                 |
| TeleCare                     | Provides remote services including the TeleCare Dashboard, Remote Fine Tuning,** and CareChat (convenient text messages, phone calls, and video calls).  | ✓                 |

\* Available for bilateral fittings with e2e wireless link  
\*\* Requires Bluetooth connection



Signia Integrated Xperience feature overview

| Features  | Description  | Performance level |
|---|--|-------------------|
|   |  | 7 IX              |
| Connectivity                                    |  |                   |
| Direct streaming for iOS (MFi) & Android (ASHA) | Hearing aids can be paired to compatible Apple iOS devices (iPhones, iPads, iPods) and ASHA-supported Android devices for direct streaming of audio such as phone calls and music.   | ✓                 |
| HandsFree for iOS                               | Enables truly hands-free calling. The wearer's voice is picked up by the hearing aid microphone and delivered in high quality to the conversation partner, while the call audio is streamed directly to the wearer's hearing aids. | ✓                 |
| CallControl for iOS                             | Calls can be answered, ended, and ignored with a simple press of the hearing aid button.   | ✓                 |
| Telecoil  | Available in Pure Charge&Go T IX only. Enables direct connection to audio loop systems and compatible telephone signals.   | ✓                 |
| StreamLine Mic compatibility                    | Stream high quality stereo sound directly from any Bluetooth device (PCs, older Apple devices, non-ASHA Android devices, etc). Can also be used as a remote mic.   | ✓                 |
| StreamLine TV compatibility                     | Stream high quality stereo sound directly from TV to hearing aids via Bluetooth.   | ✓                 |
| miniPocket compatibility                        | Optional keychain remote control.  | ✓                 |
| Tinnitus  |  |                   |
| Notch Therapy                                   | Signia's unique, patented tinnitus therapy which is proven especially effective against tonal tinnitus.  | ✓                 |
| Tinnitus Noise Therapy Manager                  | A choice of tinnitus treatments based on traditional noise therapy signals, amplified notch therapy, or a combination of the two approaches.   | ✓                 |
| Fitting Optimization                            |  |                   |
| Processing Channels / Gain & MPO handles        | Number of processing channels/handles in Connexx   | 48/20             |
| Frequency Compression                           | Improves the detection of speech sounds for wearers with reduced high frequency hearing thresholds. Frequency compression is selectively activated based on audiological criteria.   | ✓                 |
| CROS/BiCROS compatibility                       | A CROS device worn on an ear with unaidable hearing loss transmits sound to a hearing aid worn on the better ear.  | ✓                 |
| Hearing programs                                | Number of programs configurable in Connexx.  | 6                 |
| HD Music  | Preset optimized music programs for enhanced enjoyment of non-streamed music.  | 3                 |
| Smart Optimizer and Data Logging                | Tailored fine-tuning recommendations based on logging and analysis of the wearer's hearing aid use.  | ✓                 |
| Acclimatization Manager                         | Allows the wearer to benefit from enhanced audibility in the longer term, while enjoying optimal device acceptance when initially fitted.  | ✓                 |
| InSituGram                                      | Allows quick and convenient measurement of hearing thresholds with the hearing aids in place.  | ✓                 |
| AutoFit™  | Automatically provides an optimized real-ear insertion gain (REIG) setting without the need to manually match targets, enabling significantly faster real-ear verification.  | ✓                 |
| IP68  | Ensures the hearing aids will still function after being immersed under 1 m of water for 1h (excluding receiver) and no ingress of dust after 2h.  | ✓                 |
| Patented Anti-Capillary Design                  | Patented Anti-Capillary design to protect the microphones from dirt plus hydrophobic & oleophobic protection.  | ✓                 |

\* Available for bilateral fittings with e2e wireless link  
\*\* Requires Bluetooth connection

